

FORM No. 1.

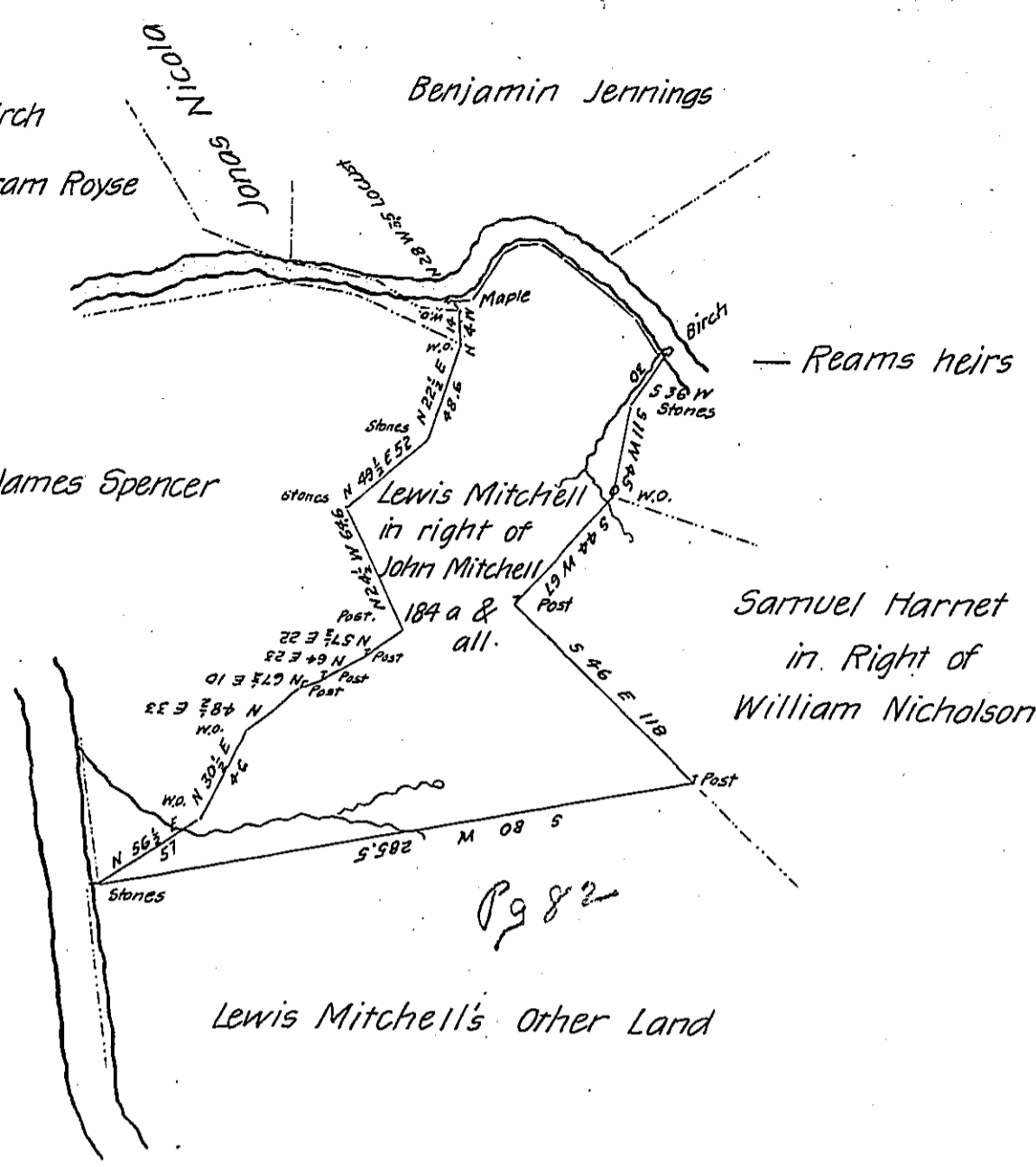
From Locust up North Fork to Birch

- N 86 E 8 Maple
- N 32 E 28
- N 63 E 5.4
- N 84 1/4 E 9.4
- S 57 1/2 E 15
- S 50 E 45.5
- S 39 1/4 E 20 to Birch

Hiram Royse

Benjamin Jennings

James Spencer



Pr

H. L. Holbrook Deputy

To Jacob Sallade Esqr
 Surveyor General

IN TESTIMONY that the above is a copy of the original remaining on file in the Department of Internal Affairs of Pennsylvania, made conformably to an Act of Assembly approved the 16th day of February, 1833, I have hereunto set my Hand and caused the Seal of said Department to be affixed at Harrisburg, this third day of May 1906

George B. Lawrence
 Secretary of Internal Affairs.